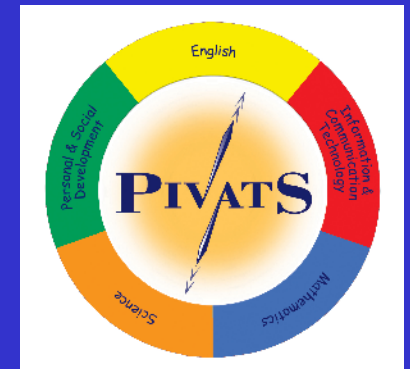
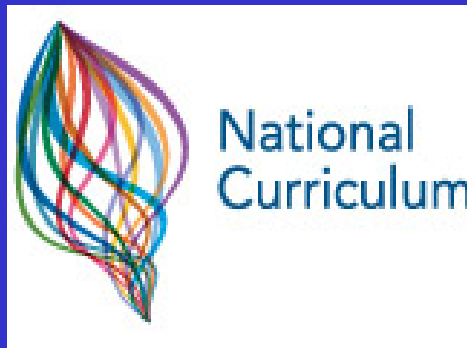


Special Educational Needs Data 2008



- **Data collected since 2003 for**
- **Pupils working at School Action Plus and**
- **Pupils with Statements of Special Educational Needs**
- **This represents about 7% of Tameside's total school population**
- **All schools except for three returned the data this year – best return to date - thank you**

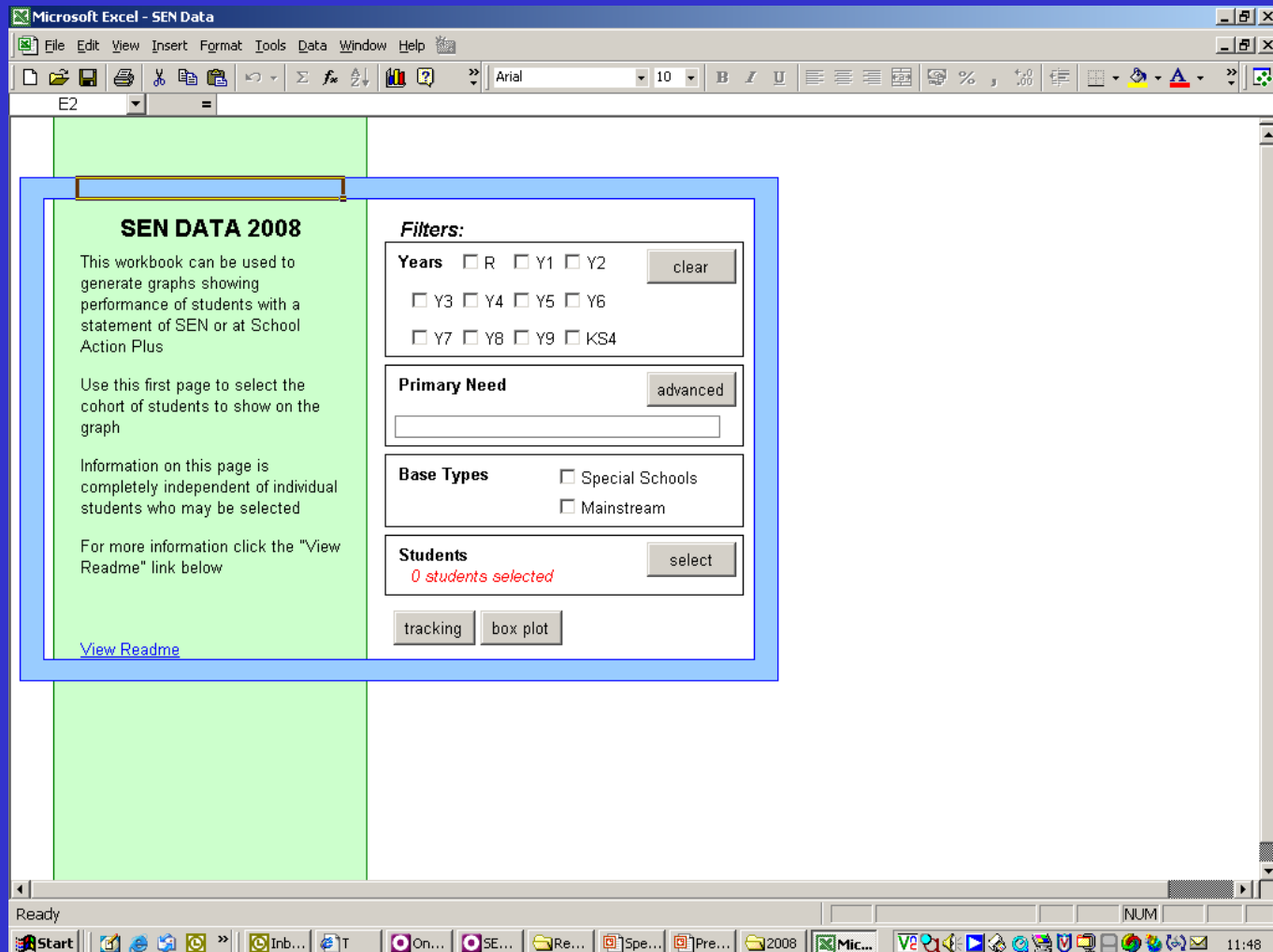
Graphs can be useful useful for:

- **Monitoring the progress of pupils / adequate progress**
- **Reviews – easy to understand**
- **SEF / Ofsted – knowing pupils and identifying the progress made in specific year groups / classes**
- **Enabling us to ask the appropriate questions - whether to request a statutory assessment for example – they do not on their own give us all the answers about where a pupil is or their progress**

Note: Lancashire County Council have amended the conversion tables for PIVATS

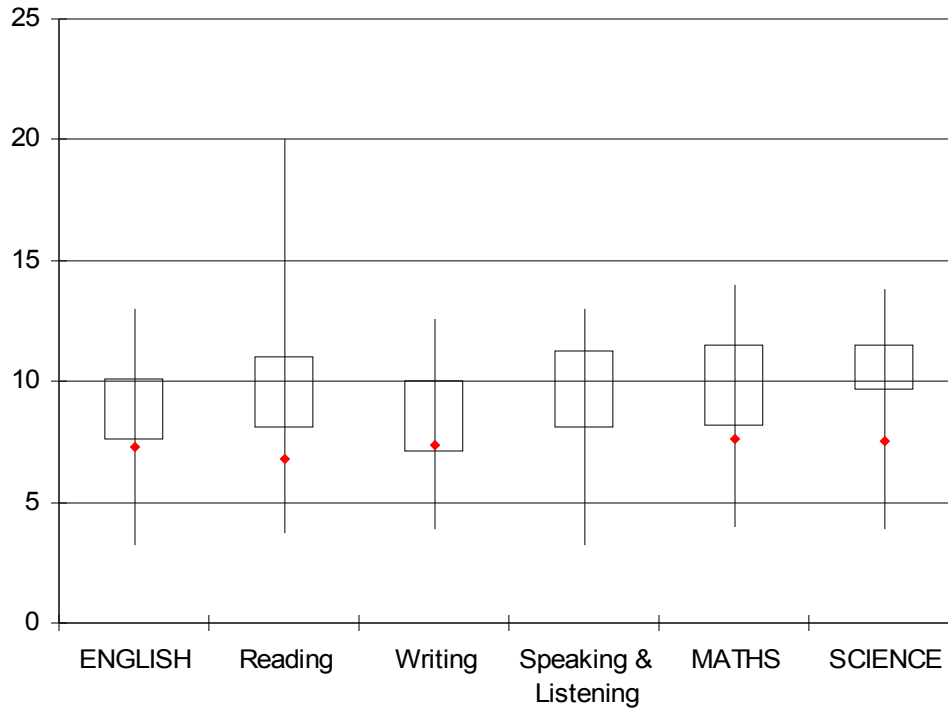
- Easy to use
- Training available

- Passwords
- Confidentiality

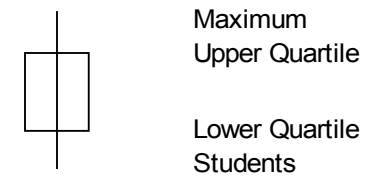


Box Plots

Subject Analysis: 2008



Key	
Level 7	19
Level 6	18
Level 5	17
Level 4	16
Level 3	15
Level 2	12-14
Level 1	9-11
P levels 1-8	1-8



◆ Joe Bloggs

Included Data:

NCY: Y2

Primary Need: MLD

Base Type: Mainstream

source: Tameside Annual SEN Data Collection

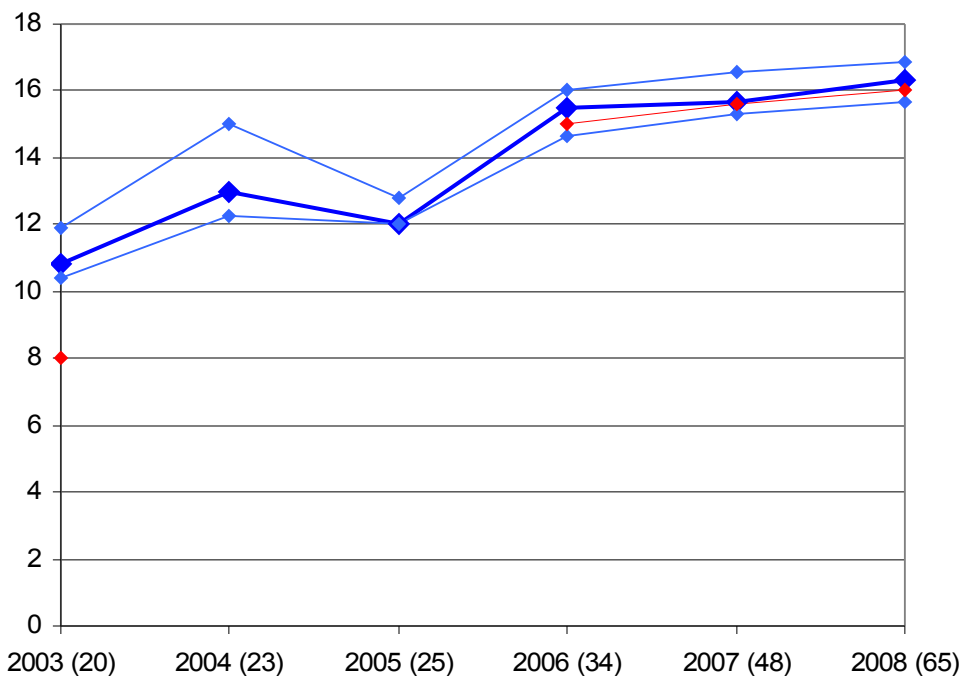
Points refer to the Durham point scores - See key for P/NC level conversions

Cohort size: 67

Main Menu

Tracking graphs

Historical trends: SCIENCE



Key	
Level 7	19
Level 6	18
Level 5	17
Level 4	16
Level 3	15
Level 2	12-14
Level 1	9-11
P levels 1-8	1-8

- ◆ Upper Quartile
- ◆ Median
- ◆ Lower Quartile

- ◆ Joe Bloggs

Included Data:

NCY (as at 2008): Y9

Primary Need: BESD

Base Type: Mainstream

source: Tameside Annual SEN Data Collection

Points refer to the Durham point scores - See key for P/NC level conversions

Cohort sizes appear in brackets on the axis

Main Menu

Subject

Dash Lines

- **Discs are on their way out to schools this week**
- **They will have instructions and passwords with them**
- **We will be providing training on using the disc to produce graphs**
- **Spend time having a play**
- **More information / any problems**

Rebecca Underwood tel: 0161 342 3750

E-mail: rebecca.underwood@tameside.gov.uk